

Desktop Soldering Robot

QUICK ET9394F/9494F



Feature

X/Y Rail

Double-rail for X/Y axis, precise moving.

Y Motor

Closed loop control, no out-of-step, precise speed control

Heating Controller

High frequency current heating, fast heating and thermal recovery, intelligent temperature compensation

Alarm Functions

Temperature abnormal and solder wire lack alarm available.

Communication Ports

DB37, DB9

Protocol

RS485, RS422, RS232

Wire Feeding

Wire feeder fixed on the soldering iron, shorten feeding distance.

Specifications

Model	QUICK ET9394F-A	QUICK ET9494F-A
Axis	4	4
Power Consumption	600W	600W
Power of Heating Controller	200W	200W
Moving Range	X/Y	300mm
	Z	100mm
Speed Range	X/Y	0.1~800 mm/sec
	Z	0.1~300 mm/sec
Repeatability	R	±180°
	X/Y/Z	±0.01 mm
Machine Load	Z	3kg
	Platform	8kg
Effective Range(Soldering Area)	260*300mm	340*400mm
Overall Dimension(W*D*H)	645x579x899mm	745x679x899mm
Weight	70kg	80kg

Optional Accessories



9036 Tip Calibration Device



Fume Extractor

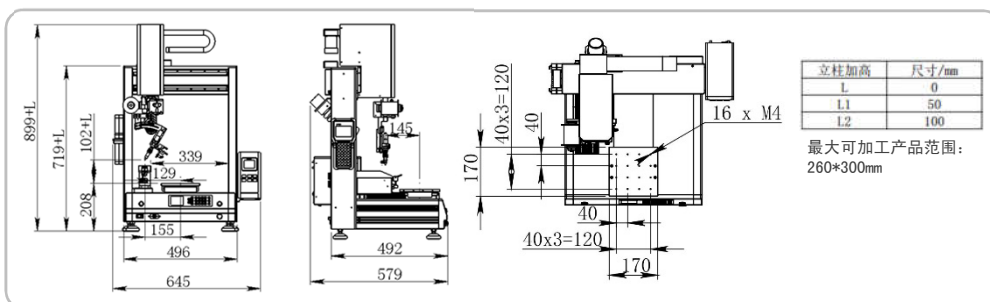


9039 N2 Generator



371T Series
Wire Feeding &
Cutting Device

ET9394F Overall Dimension



ET9494F Overall Dimension

